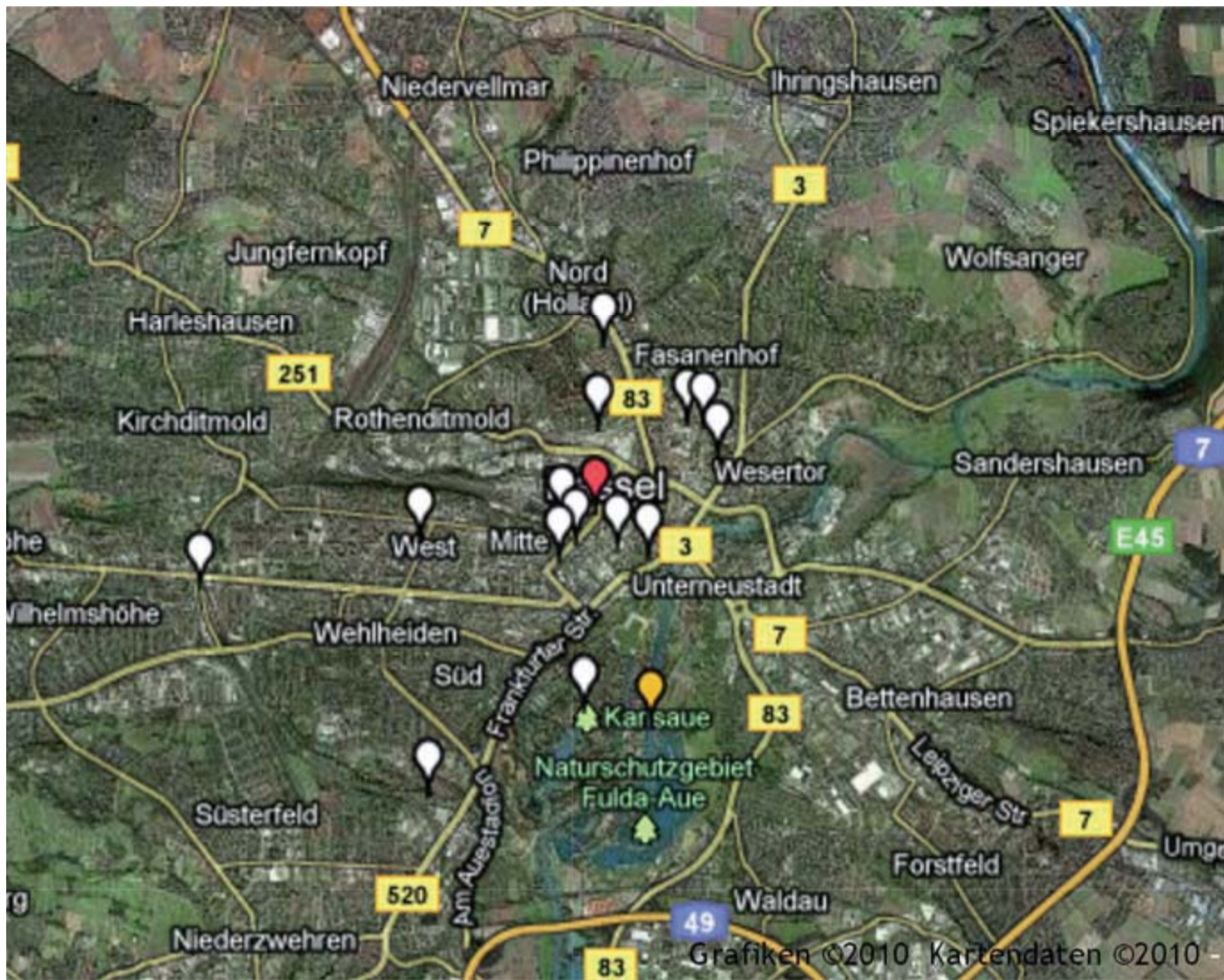


Kassel



LEGEND: University Partner Org. Design Office Research Inst. Design Project Landscape Plan



Kassel is the "Capital of the German Fairy Tale Route" where art and nature are equally important. Magnificent parks, internationally renowned art treasures, historical monuments and cultural institutions draw millions of visitors every year to this attractive city on the River Fulda.

NATURE

Nearly two thirds of Kassel consist of green open spaces in the form of park areas, tree-lined streets and woodlands. In addition, the "Bad Wilhelmshöhe" spa resort is located at the foot of the Hercules monument and the Wilhelmshöhe Palace. With its mild but bracing climate and secluded location (230-600 m a.m.s.l.), this wellness area offers visitors unrivalled surroundings including water-treading facilities, woodland paths and well-trodden hiking routes over many kilometres of attractive hillside surroundings in North Hesse.

The Bergpark Wilhelmshöhe is a unique mountain park. Art historian Georg Dehio (1850-1932), inspirator of the modern discipline of historic preservation, described the park as "possibly the most grandiose combination of landscape and architecture that the Baroque dared anywhere" ("vielleicht das Grandioseste, was irgendwo der Barock in Verbindung von Architektur und Landschaft gewagt hat."). The area of the park is 240 ha, making it the largest European hillside park, and second largest park on a mountain slope in the world. Construction of the Bergpark began in 1696 and took about 150 years.

The Habichtswald area is ideal for skiing holidays in winter and superb golfing holidays in summer. Situated in North Hesse's picturesque low mountain range areas, visitors can also enjoy the luxurious panorama of mountain woodlands and undulating valleys.

ART

The documenta exhibition in Kassel is famous worldwide. Being the world's most important exhibition of contemporary art, it attracts visitors from many countries and various continents. Every five years the documenta puts on an exhibition of contemporary trends in modern art as well as providing a forum for new exhibition concepts. First mounted in 1955 by Arnold Bode, the documenta is now in its 55th year. The 1955 exhibition deliberately emphasized the pan-European phenomenon of Modern Classicism. Today, the documenta continues to bring together a range of artistic worlds, thereby also contributing to the history of art.

Besides the documenta, virtually every art lover has heard of the collection of Old Masters in the Wilhelmshöhe Palace Art Gallery. The main part of this unique collection is devoted to Dutch and Flemish painters, including many world-famous pictures by Rembrandt, forming the largest Rembrandt collection in Germany.

Universities

Kassel University

Contact Person:
✉ [Diedrich Bruns](#)

Logged in today:
 [Diedrich Bruns](#)
 [Heike Kaiser](#)

Partner Organisations

[No partnerorganisation yet]

Offices

[No offices yet]

Research Institution

[No research_institutions yet]

Municipalities (E.U.L.P.)

[No municipalities yet]

NGOs (E.U.L.P.)

[No ngos yet]

Entered on 01. Jan 2006 by Norbert Brandstätter
Last change on 31. May 2010 by Heike Kaiser
[→ edit](#) [→ delete](#) [→ BOOKMARK](#) [→ Add to P.G.](#)

Calendar (future events)

[Show List](#) | [New Entry](#)

[no future events found]

Encyclopedia

[Show List](#) | [New Entry](#)



Development of "Landscape Planning" at the University of Kassel / Entwicklung der "Landschaftsplanung" an der Universität Kassel



The Fifties / Fünfziger Jahre



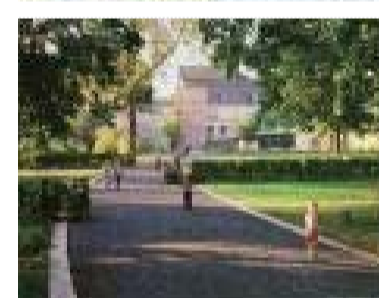
Documenta / Documenta



Sepulchral culture / Sepulkralkultur



School of Kassel / Kasseler Schule



Critical Reconstruction of the 'Unterneustadt' / Kritische Rekonstruktion der Unterneustadt

Landscape Plans

[Show List](#) | [New Entry](#)

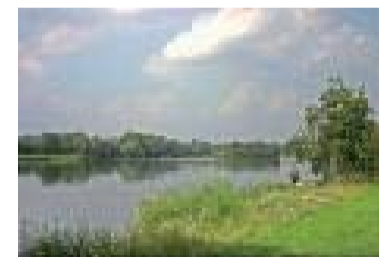


Landscape Plan of the Kassel district (Landschaftsplan der Region Kassel), Kassel, DE

Design Projects

[Show List](#) | [New Entry](#)

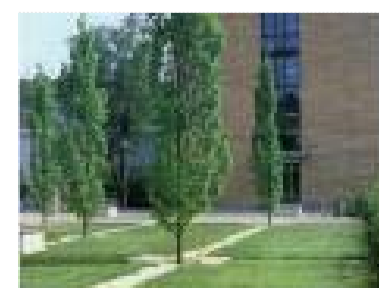
[Showing 1-6 of 20 total]



1981 German Federal Garden Exhibition (BUGA) (Bundesgartenschau (BUGA) 1981), Kassel, DE (,)



1955 German Federal Garden Exhibition (BUGA) (Bundesgartenschau (BUGA) 1955), Kassel, DE (Professor Hermann Mattern,)



Samuel Beckett Park (Samuel-Beckett-Park), Kassel, DE (,)



Marbachshöhe: Playground